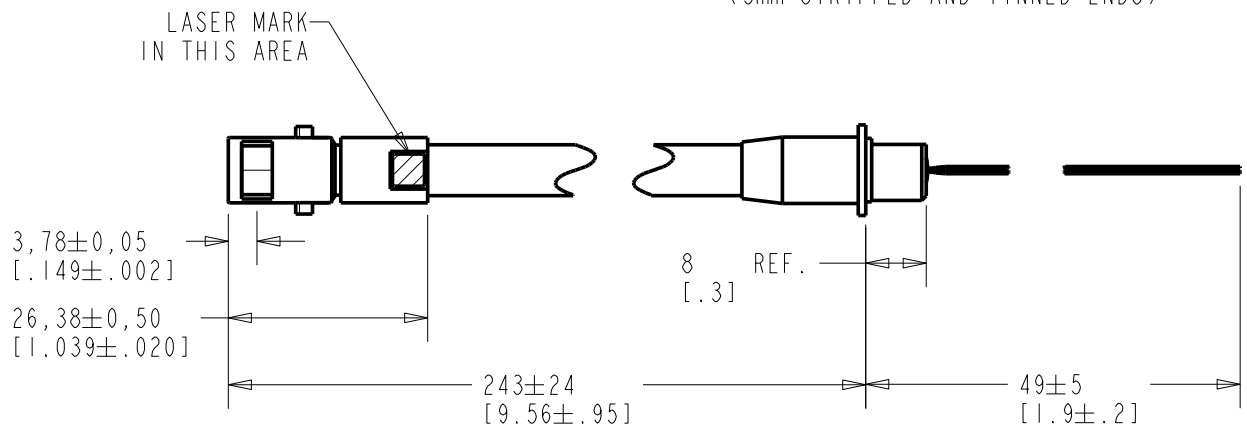
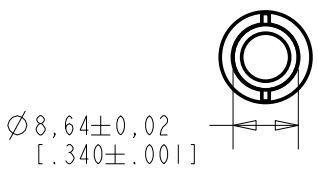
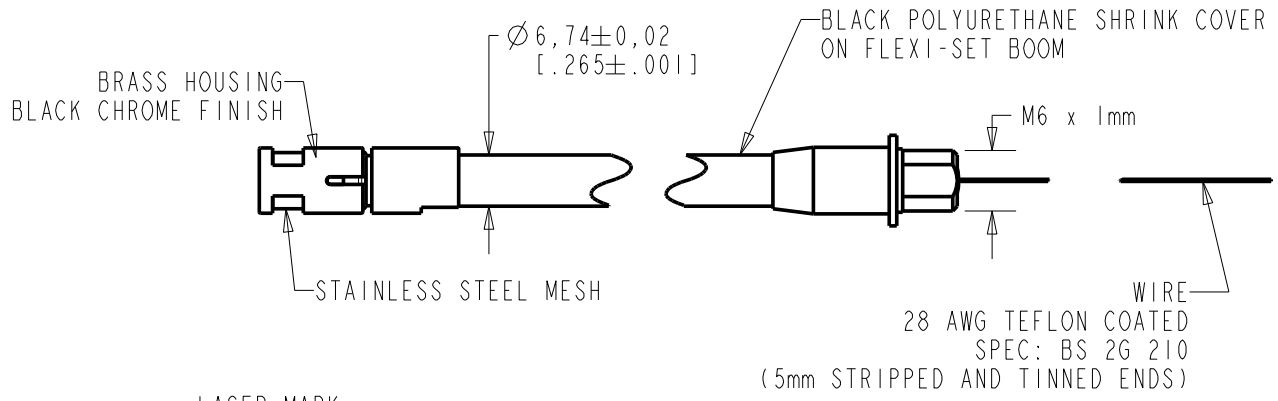


FB-CO-28531-L20
SHT 1.1



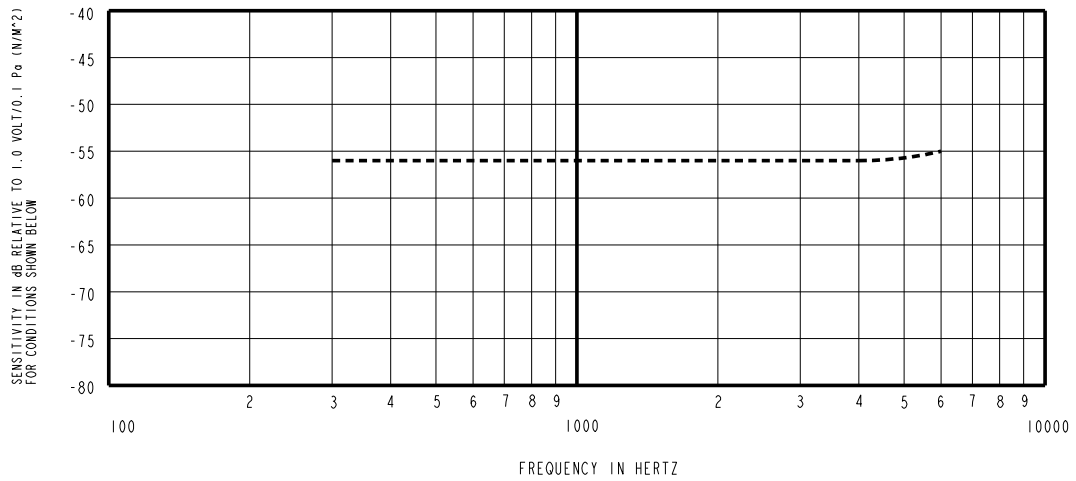
WIRE COLOR			WEIGHT GRAMS
+ve	-ve	SCREEN	
RED	BLACK	GREEN	44

DIMENSIONS IN MILLIMETERS [INCHES]

Revision	C.O. #	Implementation Date	RELEASE LEVEL	REVISION
E	C10107750	8-18-08	Active	E
D	C10106358	9-30-07		

KNOWLES ELECTRONICS
ITASCA, ILLINOIS U.S.A.

SCALE: 1:1	DR. BY: MMM	DATE: 6-1-06
DO NOT SCALE DRAWING	CK. BY: GJP	DATE: 6-6-06
TITLE: BOOM MICROPHONE FB-CO-28531-L20	APP. BY: GJP	DATE: 6-6-06
OUTLINE DRAWING	SHT 1.1	

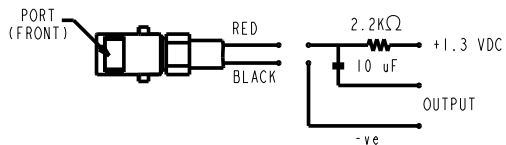
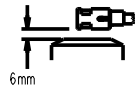


FREQUENCY	SENSITIVITY		
	MIN	NOM	MAX
300	-60.0	-56.0	-52.0
1000	-59.0	-56.0	-53.0
4000	-60.0	-56.0	-52.0

NOTES:

- MICROPHONE TO BE FUNCTIONAL WITH 10 VDC SUPPLY.
- SENSITIVITY VALUES INDICATED ON THIS SPECIFICATION ARE VALID AT 50% HUMIDITY.
- TEST CONDITIONS:
HEAD OF BOOM EXPOSED TO 94 dB SPL SWEPT SOUND FIELD AT 6mm FROM VOICE APERTURE.
ARTIFICIAL VOICE:
B & K 4227 MOUTH SIMULATOR.
- FOR MICROPHONE CAPSULE SPEC. SEE WP-23501-000 SHEET 2.1

CAPACITANCE $\pm 50\%$
POSITIVE TO NEGATIVE
100pF



LEAD IDENTIFICATION
& TEST CIRCUIT

Revision	C.O. #	Implementation Date	RELEASE LEVEL	REVISION
E	C10107750	8-18-08	Active	E
D	C10106358	9-30-07		

KNOWLES ELECTRONICS
ITASCA, ILLINOIS U.S.A.

WHEN TEST LIMITS ARE USED TO ESTABLISH INCOMING INSPECTION ACCEPTANCE/REJECTION CRITERIA, CORRELATION OF TEST EQUIPMENT WITH KNOWLES IS ALSO REQUIRED FOR ELIMINATION OF EQUIPMENT AND TEST METHOD VARIATION		DR. BY	DATE
TITLE: BOOM MICROPHONE FB-CO-28531-L20		MM	6-1-06
		CK. BY	DATE
		JJP	6-6-06
PERFORMANCE SPECIFICATION		APP. BY	DATE
SHT 2.1		GJP	6-6-06